

# ELWOOD

With its distinctive façade this home seamlessly blends yesteryear charm with contemporary living. The Elwood is a stylish stunner.



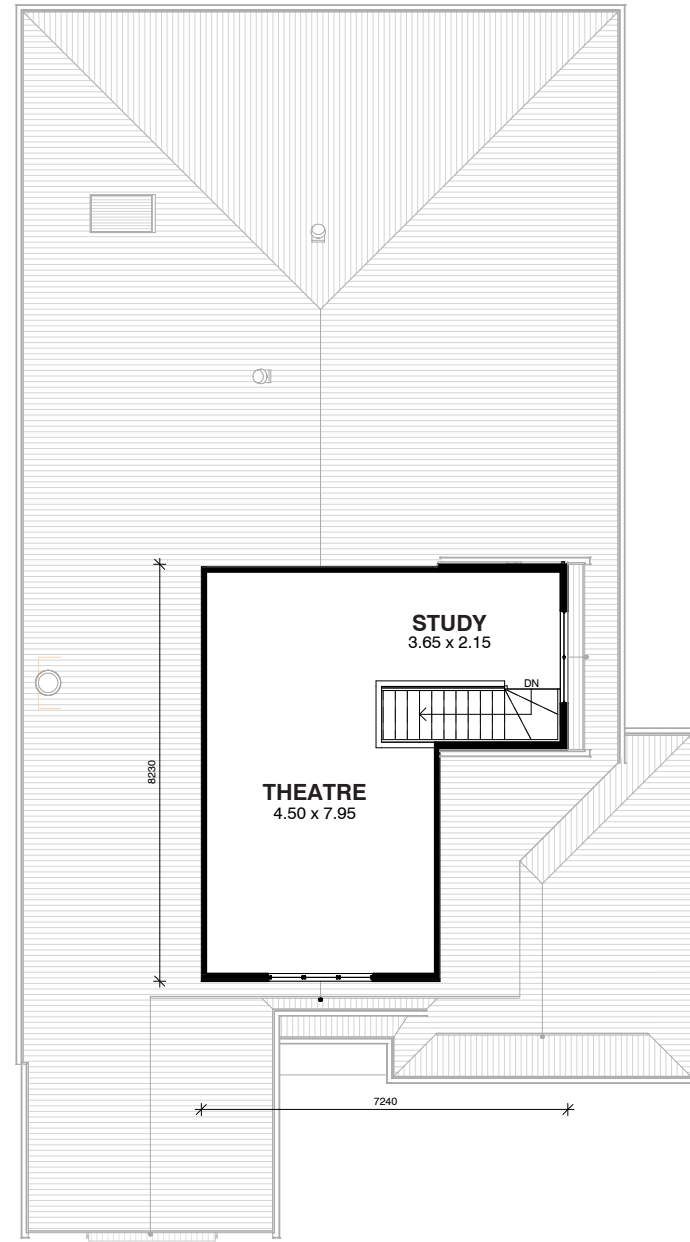
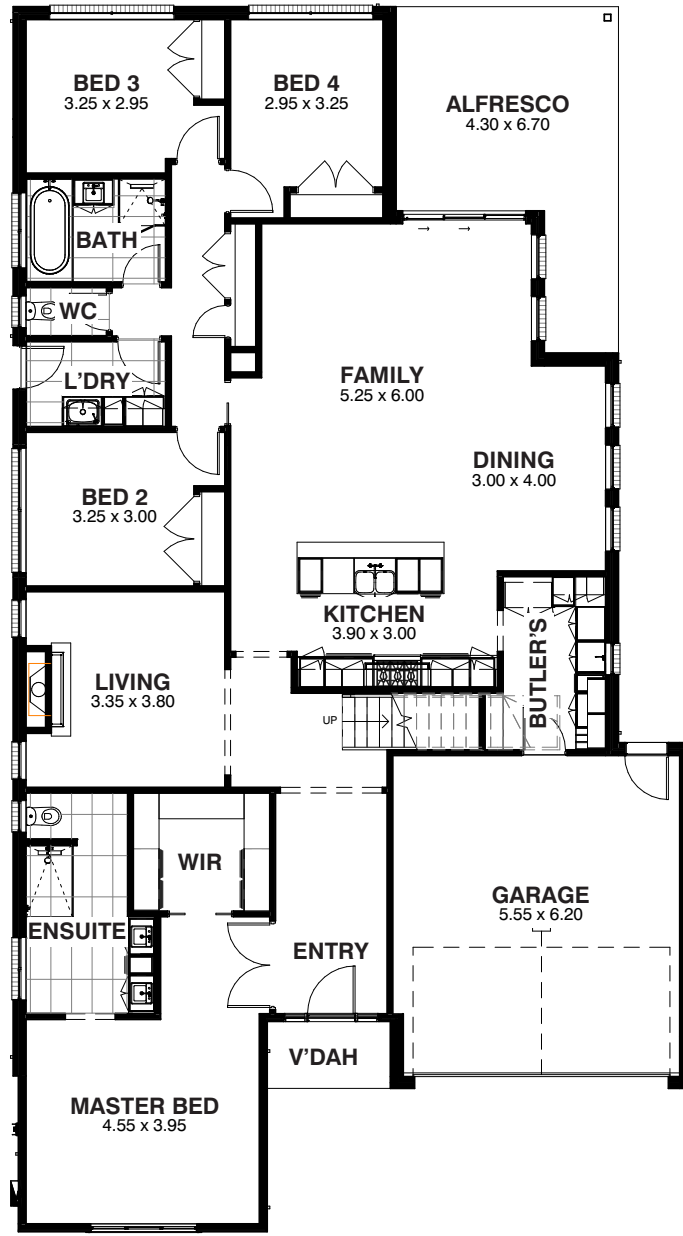
4  2  2 

SUITS LOTS 14.5 x 32m

Bringing your vision to *life*

**PREMIER**  
TRADITIONAL HOMES





# ELWOOD



## AREA ANALYSIS

Ground Fl	207.39m <sup>2</sup>	(22.32sq)
Attic Fl	48.02m <sup>2</sup>	(5.17sq)
Garage	38.12m <sup>2</sup>	(4.10sq)
Alfresco	21.08m <sup>2</sup>	(2.27sq)
Verandah	3.11m <sup>2</sup>	(0.33sq)
<b>Total</b>	<b>317.90m<sup>2</sup></b>	<b>(34.21sq)</b>

## OVERALL DIMENSIONS

Width	13.19m
Depth	23.77m

## SUITS LOTS

14.5 x 32m WIDTH X DEPTH

## FAÇADES



Coastal Cottage



Modern



Traditional

## INTERNALS



## FEATURES

- The Elwood offers timber flooring, high ceilings, feature cornices, decorative arches, picture rails and high quality finishes throughout.
- The kitchen, family and dining areas form an entertainment hub.
- A modern country style kitchen comes complete with a mantelpiece and a butler's pantry.
- This home features four bedrooms and multiple living spaces including a unique upstairs attic-style theatre and study/retreat area.



**PREMIER**  
TRADITIONAL HOMES

[PremierTraditionalHomes.com.au](http://PremierTraditionalHomes.com.au)