

# CAMBERWELL

This house has true street appeal with its traditional façade featuring real bluestone pavers. The Camberwell is all class.



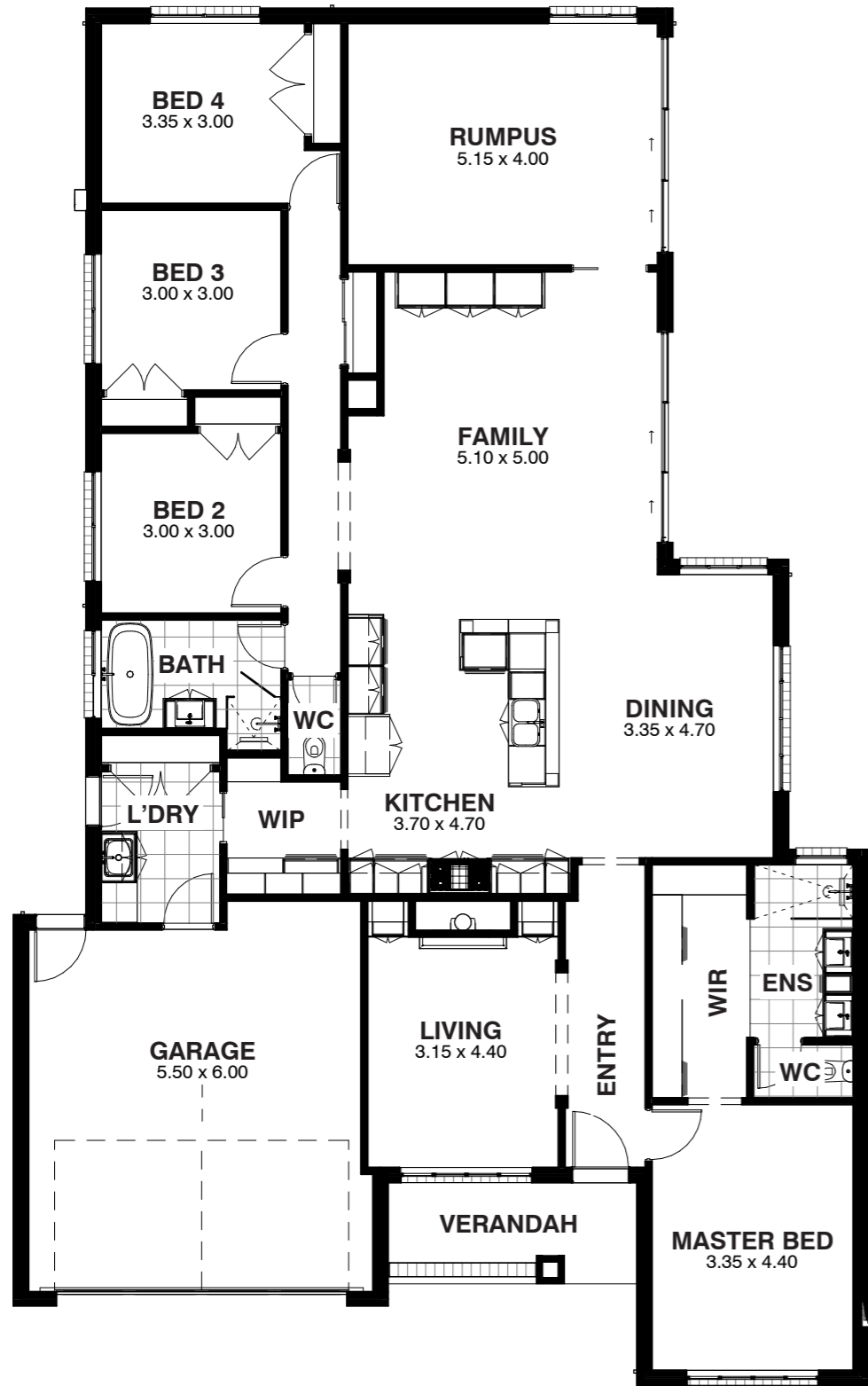
4  2  2 

SUITS LOTS 14 x 30m

Bringing your vision to *life*

**PREMIER**  
TRADITIONAL HOMES





# CAMBERWELL



## AREA ANALYSIS

Living	208.44m <sup>2</sup>	(22.43sq)
Garage	36.17m <sup>2</sup>	(4.11sq)
Verandah	4.50m <sup>2</sup>	(0.48sq)
<b>Total</b>	<b>253.50m<sup>2</sup></b>	<b>(27.28sq)</b>

## OVERALL DIMENSIONS

Width	14.15m
Depth	22.79m

## SUITS LOTS

14 x 30m WIDTH X DEPTH

## FAÇADES



Traditional



Hamptons



Modern Country

## INTERNALS



## FEATURES

- Inside are four bedrooms, two bathrooms and three spacious living areas.
- The formal lounge has a welcoming fireplace and built-in bookshelves while the family room features a large built-in entertainment unit.
- A period-style kitchen boasts Caesarstone bench tops, a freestanding Glem oven and a walk-in butler's pantry.
- Both the family and entertainment rooms open out to a large covered outdoor area. Inside the master bedroom is a beautiful decorative plaster ceiling panel.
- A walk through robe leads to a premium ensuite complete with oversized shower and his and hers double vanity.



**PREMIER**  
TRADITIONAL HOMES

[PremierTraditionalHomes.com.au](http://PremierTraditionalHomes.com.au)