

SHOREHAM

The period styling of the Shoreham is a standout, providing a warm homely feeling from the moment you walk in. The timeless design ensures your home will look great for decades to come.

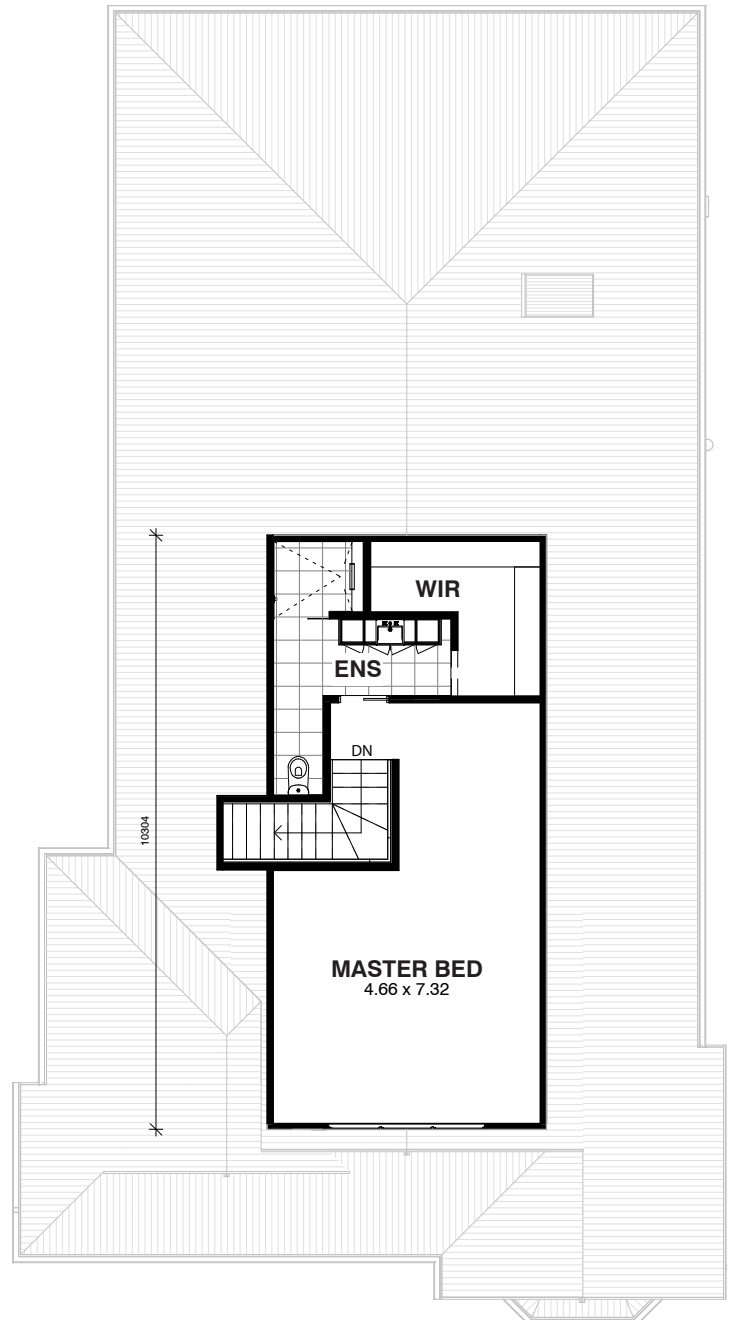
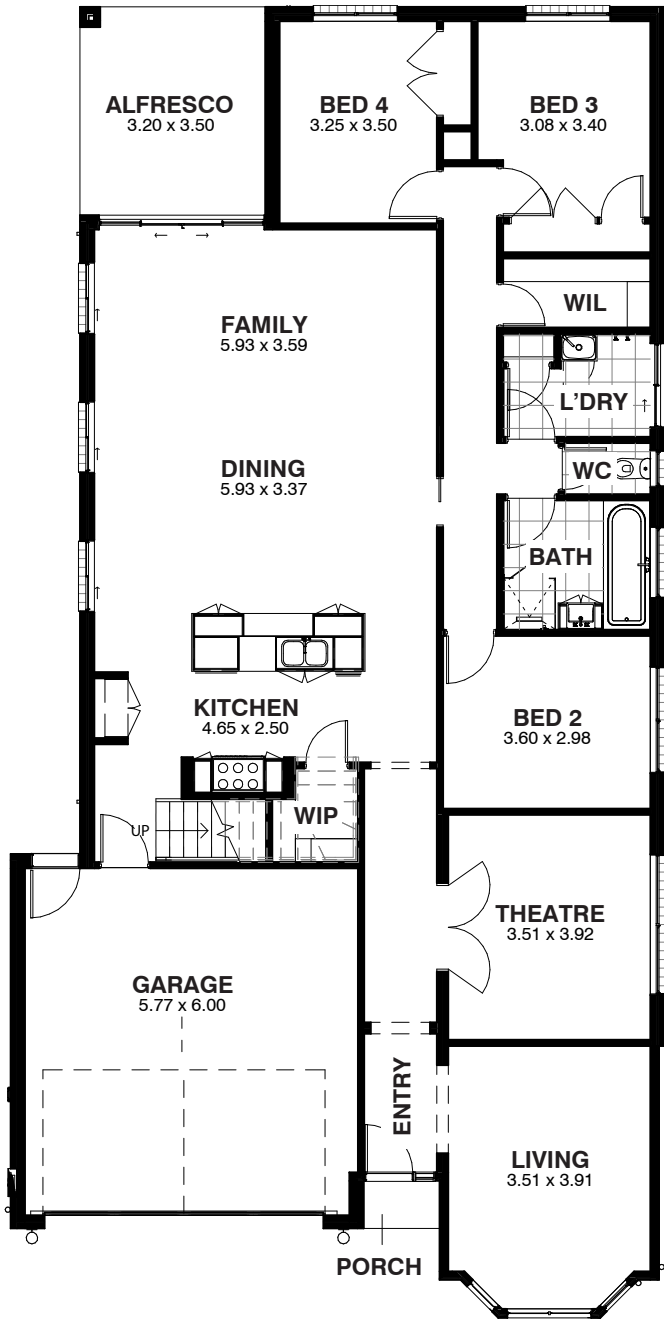


4  2  2 

SUITS LOTS 16.11 x 27m

Bringing your vision to *life*

PREMIER
TRADITIONAL HOMES



SHOREHAM

4 2 2

AREA ANALYSIS

Ground Fl	174.07m ²	(18.73sq)
First Fl	51.73m ²	(5.57sq)
Garage	37.81m ²	(4.07sq)
Alfresco	11.50m ²	(1.24sq)
Porch	1.18m ²	(0.13sq)
Total	276.29m²	(29.73sq)

OVERALL DIMENSIONS

Width	14.91m
Depth	20.47m

SUITS LOTS

16.11 x 27m WIDTH X DEPTH